

Bollard Solutions

Distributor For



BLG-05 Mega BOLLARD K-12 Certified

Bollard type: Automatic Retractable BLG-05 k-12

Operation: Pneumatic \ Elc Hydraulic \ Semi Automatic
\ Fix \ power supply 230V\380V

Dimensions: Dia 270mm * H 900mm W (T) 30mm* Inner sleeve (O) 700mm

Impact resistance: 6.8 ton @ 80 kph K-12

Options: Heating \ Led Light stripes

Operational conditions: Fully waterproof IP68 rated -
Can operate submerged - Drainage (with out pump)
- Operating temp -15°C to 54°C

Operating speed: 1.5/4 seconds

Operational frequency: 180 cycles per hr

Safety features: vehicles detectors, Led Light, Infrared sensors

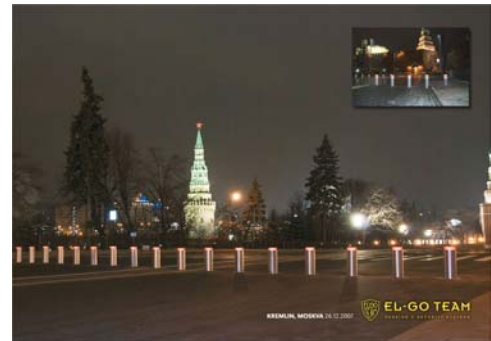
Materials: ST 52 steel

Finish treatment: zinc coating \ paint (customer request)
Stainless steel coating, Anti-corrosion treatment

Fail safe design: Hydraulic System: bollard retract during power failure. Optional UPS system. Once lowered bollards remain down until power restored. Pneumatic System: A key for raising\lowering

Controls: controls are installed in a Lockable panel to be located at any required distance from bollards.

Product Data Sheet



BLG-05 K-12 Bollards has been successfully tested by an authorized crash test for physical vehicle security to the highest standards for repelling terror attacks. This formidable strength is important when you're planning to secure embassies and high profile, high risk facilities, highly secured compounds.

Bollards are lowered for passage of authorized vehicles only. Bollards are galvanized for corrosion resistance, fitted with Led light (optional) for maximum visibility. Bollards will blend into curves and rough terrains.

Speed of operation can be adjusted to 4 seconds. Minimum maintenance required. BLG-05 bollard systems operate individually or in groups (unlimited) Hydraulic and pneumatic versions can be operated by a variety of control systems.

Safe, Reliable and Environmentally Friendly

www.BollardSolutions.com

Phone 706-283-0400

BillTalbot@BollardSolutions.com